

Meet Me in St. Louis



The Official Newsletter of the Tenth Large Scale Service Project Committee

In This Issue...

- LSSP Committee Welcome
- Meet the LSSP Committee
- And More...

St. Louis Fun Facts

- Named after St. Louis, or Louis IX, the only French King to be a saint.
- First settled in 1703
- Nicknamed: "The Lou," "STL," "Gateway to the West," "The Mound"

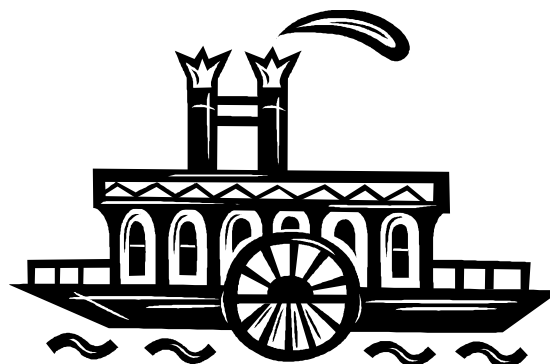
Welcome

By LSSP Chair Minerva Thai

Greetings everyone! My name is Minerva Thai and I am proud to serve as your 2010 Large Scale Service Project (LSSP) Ad-Hoc Committee Chair. I am working with a fantastic group of talented individuals from all over the United States to bring you the best LSSP you will ever experience! We have already started planning for the fun-filled service and fellowship week in St. Louis, Missouri from July 31st-August 4th! Whether it is finding service projects, figuring out food options, or organizing exciting fellowship activities, our entire committee has been hard at work figuring out what makes LSSP the great event it is and how we can improve on its already renowned reputation as many members' favorite service project.

So what are we up to exactly? Check out some of our directives we've been working on:

- Create five issues of *LSSP Points: St. Louis* to be distributed to all members periodically throughout the year. The first of which should be sent out by January 25, 2010.
- Prepare service project proposals by January 5, 2010 to present to the International Board
- Prepare Fellowship Day proposals by January 5, 2010 to present to the International Board
- Establish transportation and food by January 5, 2010 to present to the International Board



an unforgettable trip to the Gateway to the West!

I hope that you have already marked your calendars for LSSP because you don't want to miss the 10th anniversary of such an impactful and fun event! Be on the lookout for more information. Make sure to tell and encourage all the Circle K's you know to start saving up for

Meet the LSSP Committee

Minerva Thai Chair



School: Duke University
District: Carolinas
Year: 2011
Major: English
Minor: Latin and Cultural Anthropology
TV Show: Scrubs
Circle K Service Project: Anything involving hard labor, I love breaking down stuff
Football Team: I don't follow football
Favorite Hobby: Cooking

Why should people go to LSSP in St. Louis: If you don't, the children of St. Louis and I will be sad. Think of the children! Oh yeah, and there will be loads of fun service.

Cal Burton Secretary



School: University of Maryland
District: Capital
Year: 2011
Major: Biology and Business Spanish
TV Show: Glee
Circle K Service Project: Halloween Carnivals!
Football Team: Any team but the Washington Redskins
Favorite State: Florida
Why should people go to LSSP in St. Louis: Because it

will be the best one EVER! I'll make sure of it!

Brett Cutright Publicity and Internal Marketing



School: Shippensburg University
District: Pennsylvania
Year: 2010
Major: Accounting
TV Show: The Office, It's Always Sunny in Philadelphia
Circle K Activities: Relay for Life, Chickengiving
Football Team: Pittsburgh Steelers
Favorite Candy: Reese's Pieces

Why should people go to LSSP in St. Louis: To help better the city and experience the culture of St. Louis.

Matt Carney Logistics



School: Elmira College
District: New York
Year: 2010
Major: Marketing
TV Show: The Amazing Race
Circle K Service Project: Football Team: New England Patriots
Favorite Color: Green, it makes up a third of my clothing
Why should people go to LSSP in St. Louis: Besides

seeing the Gateway Arch, it is a great city to visit. For those of you who attended the Key Club International Convention in 2004, it will be coming full circle!

Meet the LSSP Committee

Chipper Ayers

Project Planning and External Relations



School: Bevill State Community College
District: Alabama
Year: 2012
Major: General Studies
TV Show: RoboSapien
Circle K Service Project: Fellowshiping with young adults with recent dramatic

brain injuries who have had their life changed in a
Football Team: I'm more likely to play tennis, run, swim, and do strength training exercises.

Favorite Aristotle Virtue: A person who is magnanimous is generous in forgiving insult or injury; free from petty resentfulness or vindictiveness; unselfish, and courageously noble in mind and heart.

Why should people go to LSSP in St. Louis: To engage in service projects that have a profound impact on the lives of the individuals being served.

Edgar Meyer

Project Planning and External Relations



School: Millsaps College
District: Louisiana-Mississippi-West Tennessee
Year: 2010
Major: Biology and Classical Studies
TV Show: True Blood, Grey's Anatomy, and Nip/Tuck

Circle K Service Project: Angel Tree through Salvation Army

Football Team: I don't really watch football, but I guess I would have to say the LSU Tigers.

Favorite Activity: Make people laugh and smile.

Why should people go to LSSP in St. Louis: They will have the opportunity to see how a large group of college students can intimately impact an area in just a few days, making a difference in the lives of others, each other, and themselves

Kristina Croes

Fellowship

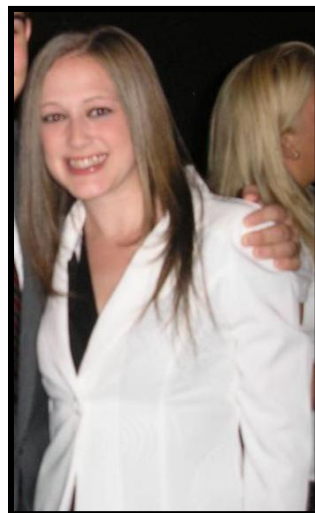


School: Eastern Michigan University
District: Michigan
Major: Business
TV Show: I don't have a TV
Circle K Service Project: Kids Against Hunger
Football Team: I don't like football
Favorite Story: The Secret Garden
Why should people go to LSSP in St. Louis: Everyone

should attend LSSP in St. Louis because it's the climax of the CKI year! It's the ultimate opportunity to do service, make friends, and lead!

Lauren Delana

International Liaison



School: College of Idaho
District: Utah-Idaho
Year: 2010
Major: Biology
TV Show: Law and Order SVU
Circle K Service Project: Trick or Treat for UNICEF and Kids on Campus
Football Team: I just like watching football
Favorite Food: Anything pasta

Why should people go to LSSP in St. Louis: To make new lifelong friends and to unite together with a great group of people for three fun-filled days of service!

Editor's Notes

By Publicity & Internal Market Chair Brett Cutright

Greetings from Central Pennsylvania! I

hope you are enjoying the first issue of the

LSSP Committee newsletter! This will be

published on a semi-monthly basis or as

information becomes available. The overall

goal of this newsletter are to educate you

on the happenings of the committee,

expand your knowledge of LSSPs of the past,

the city of St. Louis, and other important

information. If you have any ideas for articles,

please feel free to email me at

bec1896@gmail.com, and I will do my best

to incorporate them into a future issue.

Around July, this newsletter will be an even

more important guide to LSSP. Information like

a packing list, things to do during free time, and

registration information will be included. I hope

you find this newsletter helpful and are looking

forward to the next couple of issues in the

coming year.

The entire committee is extremely

excited about the next couple of upcoming

months and we cannot wait to 'meet you in

St. Louis!

Committee Directory

Chair

Minerva Thai

mdt2@duke.edu

Secretary

Cal Burton

calburt@umd.edu

International Liaison

Lauren Delana

ldelana.cki@gmail.com

Fellowship Chair

Kristina Croes

kgcroes@gmail.com

Logistics Chair

Matt Carney

southernltg@gmail.com

Project Planning and External Relations Chairs

Chipper Ayers

ChipperCKI@gmail.com

Edgar Meyer

governor@lmtcirclek.org

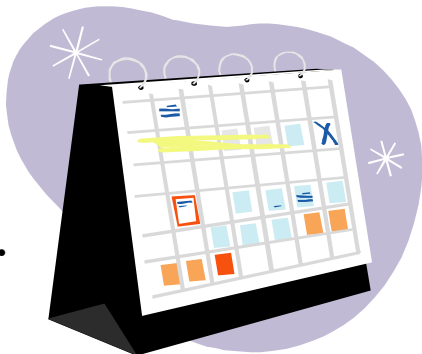
Publicity and Internal Marketing Chair

Brett Cutright

bec1896@gmail.com

Up Next...

- A Look Back at Past LSSP's
- Committee Updates
- The Theme!
- And More...



Don't Forget...

